



# The Society of Broadcast Engineers

**Fox Valley Wisconsin SBE Chapter 80**  
**PO Box 1519**  
**Appleton, WI 54912-1519**

**September 2012**

---

The September meeting of SBE chapter 80 will be held at the Out O' Town Club on Tuesday September 18th at noon.

Chairman's Corner

Welcome to our eNewsletter!

Our next meeting of Chapter 80 will be on Tuesday, September 18th, 2012 at noon at the Out O' Town Club in Kaukauna. The September program, at the Out-O-Town Club is Practical Fixes for 1<sup>st</sup> Generation IP audio equipment with Hints and Tips to keep the bytes flowing in your Axia IP Audio system presented by Tim Laes & Steve Brown.

The August program, at the Out-O-Town Club was an open forum discussion of what's going on in the industry. Discussions included EAS CAP leftovers, Spring-Summer storm damage stories...etc. Thanks to all who attended and participated  
In the discussion.

***\*\*SBE Ch.80 Elections will be held at the November meeting. Please bring your nominations to the September meeting.\*\****

Upcoming events:

Tuesday, October 9 thru Thursday, October 11, 2012 – SBE/WBA Broadcasters Clinic, Madison Marriot West Middleton, Wi. Details and registration: [www.wi-broadcasters.org](http://www.wi-broadcasters.org) .

Tuesday, November 20, 2012 – SBE Chapter 80 – TBD

Tuesday, December 11, 2012 – SBE Chapter 80 Annual Christmas Party

Tuesday, January 15, 2013 – SBE Chapter 80 – TBD

I look forward to seeing you on Tuesday September 18th, 2012 at our Chapter 80 monthly meeting at the Out O' Town Club in Kaukauna.

Regards,

**Timothy J Laes**

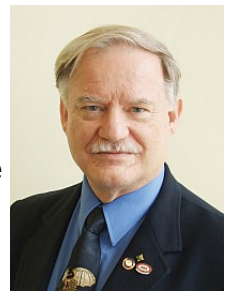
## CHAPTER 80 ELECTED AND APPOINTED OFFICERS 2011-2012

Chairman	Tim Laes	WGEE WIXX WNCY WROE	920-435-3771	<a href="mailto:tlaes@new.rr.com">tlaes@new.rr.com</a>
Vice Chairman	Steve Konopka	WPNE TV/FM	920-336-3541	<a href="mailto:skonopka@ecb.org">skonopka@ecb.org</a>
Treasurer	Steve Brown	WHBY WAPL WKSZ WZOR	920-733-6639	<a href="mailto:sbrown@wcinet.com">sbrown@wcinet.com</a>
Secretary	Keith Kintner	UWO	920-424-7357	<a href="mailto:kintner@uwosh.edu">kintner@uwosh.edu</a>
Program Chairman	John Pfankuch	Heartland Video Systems	920-893-0204	<a href="mailto:jpfankuch@hvs-inc.com">jpfankuch@hvs-inc.com</a>
Program Chairman	Bill Hubbard	UW Green Bay	920-465-2510	<a href="mailto:hubbardw@uwgb.edu">hubbardw@uwgb.edu</a>
Membership Chairman	Al Kilgore	WRVM	920-842-2839	<a href="mailto:akilgore@wrvm.org">akilgore@wrvm.org</a>
Sustaining Memberships	Greg Tadyshak		920-438-3258	<a href="mailto:gtadyshak@new.rr.com">gtadyshak@new.rr.com</a>
Frequency Coord. < 1 GHz	Tim Laes	WGEE WIXX WNCY WROE	920-435-3771	<a href="mailto:tlaes@new.rr.com">tlaes@new.rr.com</a>
Frequency Coord. > 1 GHz	Joe Kamenick	KAMENTECH, LLC	715-359-7088	<a href="mailto:jckamenick@peoplepc.com">jckamenick@peoplepc.com</a>
Newsletter Editor	Bill Tessman	Heartland Video Systems	920-893-4204	<a href="mailto:btessman@hvs-inc.com">btessman@hvs-inc.com</a>
Newsletter Editor	Dave Driessen	WGBA WACY	920-494-2626	<a href="mailto:ddriessen@nbc26.com">ddriessen@nbc26.com</a>
Certification Chairman	Jim Sams	UWGB	920-465-2572	<a href="mailto:samsj@uwgb.edu">samsj@uwgb.edu</a>
Chapter 80 Webmaster	Jim Jensen	Retired	920-850-2633	<a href="mailto:jim@bjensen.net">jim@bjensen.net</a>
EAS Coordinator	Steve Konopka	WPNE TV/FM	920-336-3541	<a href="mailto:skonopka@ecb.org">skonopka@ecb.org</a>
Past Chairman	Keith Kintner	UWO	920-424-7357	<a href="mailto:kintner@uwosh.edu">kintner@uwosh.edu</a>
Board of Dirs/SBE Liaison	Keith Kintner	UWO	920-424-7357	<a href="mailto:kintner@uwosh.edu">kintner@uwosh.edu</a>

### SBE elects Hogan to second term as president

Results are in for the 2012-13 SBE National Board of Directors after the society's first online election. Ralph Hogan, CPBE, DRB, CBNE remains as president for a second term.

"I am looking forward to continuing the excellent progress the Society has made in the past year and begin exploring the recommendations of the strategic planning committee with the board of directors at our October National Meeting," said Hogan.



Officers are elected to serve one-year terms on the Society of Broadcast Engineers Board of Directors. Returning to the board as officers are Hogan, director of engineering for KJZZ-FM/KBAQ-FM, Tempe, Ariz. as president; Joe Snelson, CPBE, 8-VSB, vice president of engineering at Meredith Corporation in Las Vegas, Nev. as vice president; James Leifer, CPBE, director of engineering & IT at Clear Channel South Florida in Miami, Fla. as secretary; and Jerry Massey, CPBE, 8-VSB, AMD, DRB, CBNT, corporate regional engineer and DoE at Entercom Communications in Greenville, S.C. as treasurer.

The election of six directors, for two-year terms, includes the return of Tim Anderson, CPBE, DRB, CBNT, manager, strategic radio market and product development, Harris Corporation Broadcast Communications Division in Mason, Ohio; Gary Kline, CBT, CBNT, senior vice president of engineering, Cumulus Media in Atlanta, Ga.; and Scott Mason, CPBE, CBNT, west coast director of engineering, CBS Radio in Los Angeles, Calif.

New to the board as directors are Andrea Cummis, CBT, CTO, senior director of engineering and operations, WNET in New York, N.Y.; John Heimerl, CPBE, vice president of strategic technologies, WHRO-TV, WHRO-FM, WHRV-FM in Norfolk, Va.; and Wayne M. Pecena, CPBE, 8-VSB AMD, DRB, CBNE, director of engineering, Texas A&M University-Educational Broadcast Services in College Station, Texas.

2012 was the first year the society offered online voting, which saw a 64% increase in ballots cast from the previous year. The total number of ballots cast was 1,313, which was 511 more ballots than in 2011. ([sbe.org](http://sbe.org))

## SBE Update

The Society of Broadcast Engineers mourns the loss today of its founder, **John Battison**, P.E., CPBE. Our sympathies are extended to his wife Sara, daughter Victoria, son Mark the entire Battison family and his many friends and colleagues.

John's dream to form an organization devoted solely to the professional development of broadcast engineers and the field of broadcast engineering was realized far beyond what he had imagined. For more than 48 years, the organization, which was fueled in its early days by his vision and passion, has positively affected the lives and careers of thousands of men and women who have made broadcast engineering their career. All of us, who have benefited from our affiliation with the SBE during our careers, owe a debt of gratitude to SBE Member #1, John Battison.

Ralph Hogan, CPBE, DRB, CBNE  
SBE President

## RF Safety Course offers simplified registration and participation on September 25

Strickland monitoring RF

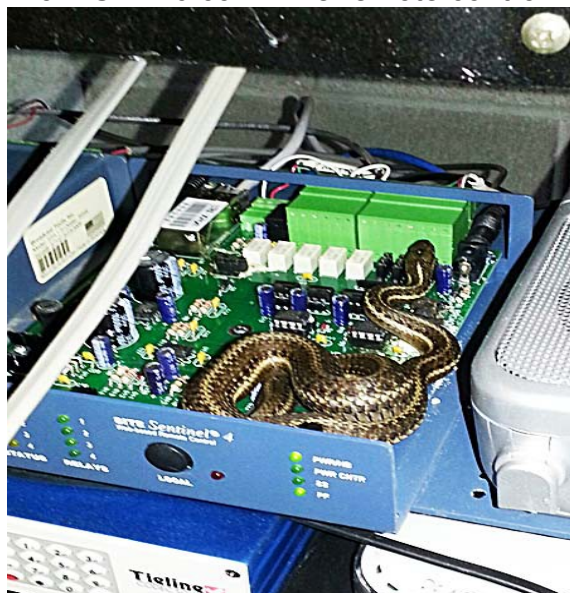


The SBE RF Safety Course, presented by Richard Strickland of RF Safety Solutions, takes place at noon ET on September 25. Registration has been simplified so that attendees can participate from any location with Internet access. Among other topics, Strickland will discuss how to prove compliance at a broadcast site, the biological effects of RF radiation and the distinct differences between RF radiation and ionizing radiation, FCC and OSHA regulations and RF hazard protection equipment. A previous attendee of the course said,

“Richard did a great job of providing examples, answering questions, and keeping the material interesting. I appreciate the ability to download slides for future reference.”

The course is designed for broadcast station personnel, including chief and assistant chief engineers, transmitter site engineers, ENG and SNG maintenance personnel and management that need to have an understanding of RF safety issues and regulations. For more information and to register click [here](http://sbe.org). (sbe.org)

From SBE16.com. The remote control was operating 'abnormally'



## SBC Exam Schedule

The SBE Certification Committee has established the following exam dates. Choose the exam period that is best for you.

<b>Exam Dates</b>	<b>Location</b>	<b>Application Deadline</b>
November 2-16, 2012	Local Chapters	September 14, 2012
February 8-18, 2013	Local Chapters	December 31, 2012
April 9, 2013 NAB convention		March 22, 2013
June 7-17, 2013	Local Chapters	April 12, 2013
August 9-19, 2013	Local Chapters	June 1, 2013
November 1-11, 2013	Local Chapters	September 13, 2013

When you are ready to take an SBE exam, please fill out the appropriate application and send it into the SBE National office. You will be notified once your application has been approved. Approximately 3 weeks before the exam time, your local certification chairman will receive a list of applicants in his/her area. He/she will then contact those applicants to schedule a date, time and place for the exams. The exams will be mailed back to the National office for grading. The pass/fail grades will then be mailed directly to the applicants. (sbe.org)

## Frequently Asked Questions about SBE Certification

Q. What is the passing score for the certification exams?

- ◆ Certified Television Operator (CTO) - 90%
- ◆ Certified Radio Operator (CRO) - 90%
- ◆ Certified Broadcast Technologist (CBT) - 70%
- ◆ Certified Broadcast Networking Technologist (CBNT) - 70%
- ◆ Certified Video Engineer (CEV) - 70%
- ◆ Certified Audio Engineer (CEA) - 70%
- ◆ Certified Broadcast Television Engineer (CBTE) - 70%
- ◆ Certified Broadcast Radio Engineer (CBRE) - 70%
- ◆ Certified Broadcast Networking Engineer (CBNE) - 84% combined score of multiple choice and essay question
- ◆ Certified Senior Television Engineer (CSTE) - 84% combined score of multiple choice and essay question
- ◆ Certified Senior Radio Engineer (CSRE) - 84% combined score of multiple choice and essay question
- ◆ 8-VSB Specialist (8-VSB) - 84% combined score of multiple choice and essay question
- ◆ AM Directional Specialist (AMD) - 84% combined score of multiple choice and essay question
- ◆ Digital Radio Broadcast Specialist (DRB) - 84% combined score of multiple choice and essay question

Q. What happens if I don't pass?

A. You can retake the exam for a \$25 fee as early as the next scheduled exam session.

Applicants are only notified whether they passed or failed an exam. Scores are not given out to anyone.

Q. How long will it be once I've taken the test before I know the results?

A. That answer varies depending on the type of test you have taken. An exam that doesn't include an essay question can be graded and the results sent back within a couple days of receiving it at the SBE National office. If there was an essay included with the exam, those grades may take longer. (The essays are sent to members of the National Certification Committee for grading.)

Q. Once I pass an exam, what then?

A. You will receive a card and certificate of certification in the mail. Your certification is valid for five (5) years. SBE will also notify your employer, or anyone else you designate, of your certification if you request at the time of application.

Q. How many books may I bring to the examination?

A. As many as you like, but remember they cannot be used during the essay portion of the senior, specialist or networking engineer exams. You may also take in any book that you think may be helpful for your exam, even if it does not appear on the Suggested Reference Lists.

Q. How about written notes?

A. You may not utilize notes during the examination process. This is done to insure the integrity of the question database.

Q. Are calculators and computers allowed during the test?

A. Calculators, yes -- computers, no. You may utilize your smart phone as a calculator but you will be required to put it in "airplane mode". You will be on your honor not to use it for recording notes during the test.

Q. Why aren't computers allowed?

A. Maintaining the integrity of the question database is critical to the success of our program. We want to be certain that the questions are not removed from the examination room, and by eliminating computers and restricting handwritten notes, we hope to accomplish that objective.

Q. Will success in a certification test guarantee a pay increase for me?

A. Sorry, no one can guarantee that. However, you will be joining a select group that proclaims to the world that they believe in investing in their future and improving their value to their employees.

Q. How current are the exam questions?

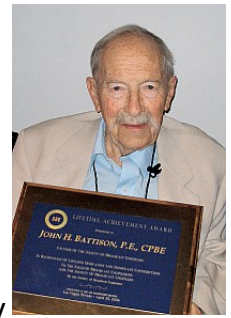
A. They are reviewed by the Certification Committee at least three times per year. We make a significant investment to keep the questions aligned with current technology.

Q. How do I list my certifications

A. Check out this chart to better explain how to list your certifications.  
(sbe.org)

## Scholarship named for SBE founder John Battison

The founder of the Society of Broadcast Engineers, John H. Battison, P.E., CPBE, who passed away on Aug. 28 at the age of 96, is being memorialized with the creation of a scholarship in his name. The John H. Battison SBE Founder's Scholarship will be presented to an applicant who seeks to enter or advance in the field of broadcast engineering. This decision comes today, on what would have been Battison's 97th birthday.



The Ennes Educational Foundation Trust, the non-profit, charitable arm of the Society of Broadcast Engineers, is adding the scholarship to several others it already awards annually. The new scholarship recognizes the instrumental role Battison played in the formation of the SBE. It was Battison's vision for a professional organization dedicated solely to the broadcast engineer and his personal efforts to invite station engineers from across the U.S. and Canada to join, that resulted in the organization of the SBE in 1964. Battison served as the new organization's steering committee chairman and then as its first president.

"No one person has done more towards advancing the broadcast engineering profession than John Battison. The Ennes Trust is pleased to honor the memory of the founder of the Society of Broadcast Engineers with the creation of this scholarship," said Ennes Trustee, Fred Baumgartner, CPBE. The scholarship will be awarded to selected applicants who are currently in the broadcast engineering field and seek to expand their knowledge in media technology, or to a graduating high school senior who plans a career in broadcast engineering and will be attending a college, university or technical school.

Ralph Hogan, CPBE, DRB, CBNE, the president of the SBE said, "John Battison had a vision of an organization that would provide station engineers with technical education they could use in their work everyday. I can't think of a better way to memorialize him than through a scholarship that will help young engineers advance their technical knowledge in our business."

Applications for the John H. Battison SBE Founder's Scholarship will be available by October 1, 2012 and can be obtained on the SBE website, [www.sbe.org](http://www.sbe.org). The annual deadline for all Ennes Scholarships is July 1 with the announcement of the recipients made by the end of July.

Those wishing to make a contribution to the John H. Battison SBE Founder's Scholarship fund may send donations to: Ennes Educational Foundation Trust, 9102 N. Meridian Street, Suite 150, Indianapolis, IN, 46260. Checks should be made payable to: Ennes Educational Foundation Trust and write "Battison Scholarship" on the memo line. The Ennes Educational Foundation Trust is a 501(c)3 charitable organization. Contributions by individuals are tax deductible.

---

## SBE-WI Job Opening

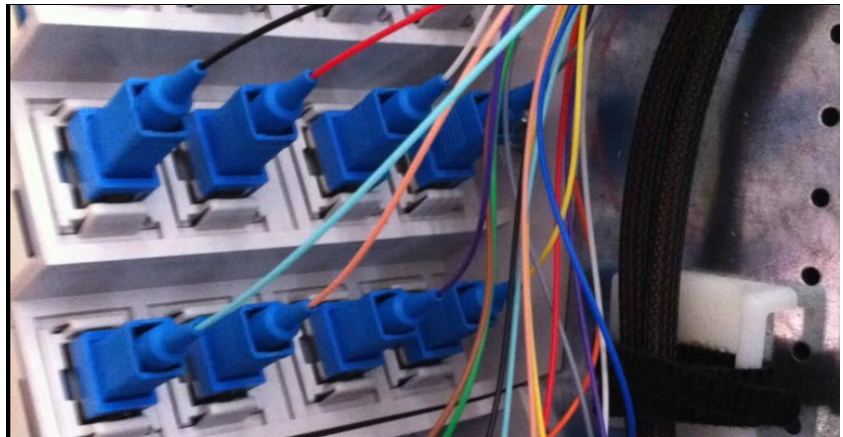
Entercom Milwaukee presently has a job opportunity as Director of Engineering. If you have the following skills, please apply on-line at <http://www.entercom.com> under careers:

- Minimum 5 years broadcast engineering experience, at least 3 years as DOE or Chief Engineer;
- Proven managerial experience;
- Strong, proven time management skills including ability to multi-task in a multiple project environment;
- Experience in project planning, management and execution;
- Hands-on FM, HD and AM transmitter experience;
- AM Directional Antenna experience;
- Ability to inspect, repair, and maintain all broadcast radio station equipment, including transmitters, antenna's, satellite downlinks, automation system, studio equipment, remote equipment, generators, telephone system and related other equipment.
- IT & Network knowledge and experience helpful;
- Strong PC skills including proficiency with Microsoft Office (Word, Excel, PowerPoint)
- Working knowledge of FCC Rules and Regulations;
- Experience with Computer based audio storage system, Maestro preferred;
- Experience with digital audio and audio streaming;
- Experience with facility management;
- Proven managerial experience recruiting, mentoring and overseeing a multi-person staff.

Qualifications: Must have at least four years of college or technical school and/or training; or equivalent combination of education and experience, Ability to multi-task and work various hours and days, including some weekends and holidays. Ability to provide on-call status 24/7 in case of equipment failure. Must be able to lift 40lbs. FCC General Class License and/or SBE Certification and valid driver's license.

Entercom Milwaukee is an Equal Opportunity Employer

**Web site of the month.** For a good tutorial on fiber optics check out the OLE (On Line Engineer).video here <http://www.theonlineengineer.org/v20/Videos/071afobcast.html>



# KRUD RADIO

BY Brian Wilson & Jim Tyler



Our Story So Far: Scott, "The Self-Consumed", is upset that he has to do a "Remote Broadcast" on the sacred "Day Off". He pleads with the High Promotions Conselor to reverse his decision. "Surely this is punishment for my transgression against Corporate!" He bemoans, "For not even the nocturnal guard was aware that the Day Power had not shifteth to the Powers of Darkness, and therefore our rantings were heard all the way to the Hebrides!"

"Oh, Man!" lamented Sir Buzzalot. "Doth ye not know of the wrath of the mighty FCC?" Scott frantically researched the Books of Knowledge, seeking the wisdom of the elders in such crimes of ommission, yet they yielded no precedent. "Yea, if the Great Commision findeth of our deed, we are truly screwed!" cries our hero.

But even as Prince Scott utters these words, he is unaware that the field soldiers of the Great Commission are already at the gates of the city.



**Cellcom**  
Clearly The Best.

**Jim Lienau**  
Vice President of Corporate  
Technical Services and CTO  
920-617-7101  
Cell: 920-639-0000  
Fax: 920-617-7329  
Pager: 920-613-0151

450 Security Blvd.  
P.O. Box 19079  
Green Bay, WI 54307-9079  
Web: www.cellcom.com  
E-mail: jim.lienau@cellcom.com

 **EVANS ENGINEERING SOLUTIONS** 216 Green Bay Rd., Suite 105  
Thiensville, WI 53092-1625  
www.evansengsolutions.com

**PROBLEM SOLVING BEYOND EXPECTATIONS**

**Ben Evans, P.E.**  
President

Phone: (262) 518-0002 · Cell: (414) 530-8234  
Email: beneevansengsolutions.com

**RENEWABLE ENERGY · WIRELESS COMMUNICATIONS · BROADCAST**

**WOODWARD RADIO GROUP**

**Greg Bell**  
VP Broadcast/General Manager


Direct 920.831.5655  
Cell 920.570.2162 • gbell@wrcnet.com  
PO Box 1519 • Appleton, WI 54912-1519

**Mark Bartolotta**  
Regional Sales Manager

  
**HVS**

**Heartland Video Systems, Inc.**  
1311 Pilgrim Road  
Plymouth, WI 53073  
Dir: (920) 893-6743  
Tel: (800) 332-7088  
Cell: (920) 912-1054  
Fax: (920) 893-3106  
EMAIL: mbart@hvs-inc.com  
www.hvs-inc.com

*Broadcast & Professional Solutions*  
**CONVERSION • STORAGE • COMPRESSION • TRANSMISSION**  
**AUTOMATION • ROUTING • MONITORING • INTEGRATION**

**BELDEN**  
SENDING ALL THE RIGHT SIGNALS

**Don Heinzen**  
Account Manager  
Enterprise Solutions Division

Direct: 608.848.2001  
don.heinzen@belden.com

9001 Hawks Reserve Lane, #103  
Verona, WI 53593  
Cell: 608.235.7539

www.belden.com


**LeDuc Properties LLC**  
American Communications Co

**(Jack) Jon Anthony LeDuc**  
Chairman-CEO

133 North Superior Street  
DePere, WI 54115 USA

920.632.4364  
Cell: 217.7598


Skyking\_Concorde@hotmail.com

  
**N Sight TOWER**

Office: 920.617.7100  
Fax: 920.617.7021  
1046 Gray Ct.  
Green Bay, WI 54303

www.nsigntower.com

**Antenna System Specialist**

TV		Troubleshooting
FM		Sweep Testing
AM		Infrared Testing

**Resonant Results.com**  
Richard Wood (608)839-3950

**WOODWARD RADIO GROUP**

**Steve Brown, CPBE, CBNT**  
Director of Broadcast Engineering  
W9APL Amateur Call Sign


Direct 920.831.5659  
Fax 920.739.0494 • sbrown@wrcnet.com  
PO Box 1519 • Appleton, WI 54912-1519

**Token Creek**  
**MOBILE TELEVISION**

**John Salzwedel**  
President

501 Moravian Valley Road, Waunakee, Wisconsin 53597  
Phone: (608) 849-4965 Fax: (608) 849-4035 Cell: (608) 235-9632  
Web Page: www.tokencreek.com E-Mail: john@tokencreek.com